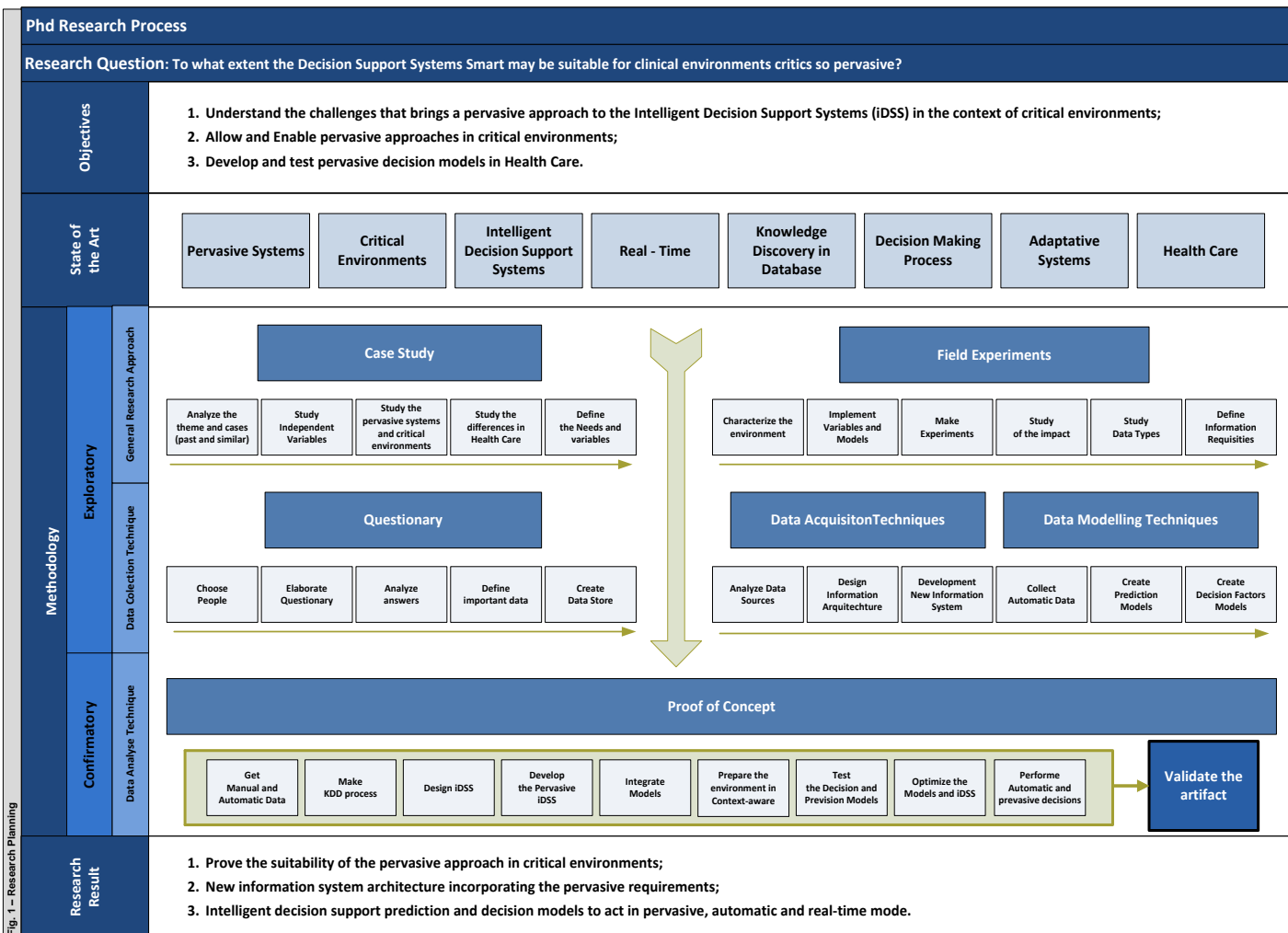




Pervasive Intelligent Decision Support in Critical Health Care



Contributions

Generate new knowledge with the primary aim to answer the research question.

Medical

Presentation of studies and new knowledge that improve the patient clinical condition based on the prediction, decision and implementation of improvements in the environment and the decision making process.

Information Systems

A new knowledge that allows help to solve problems related to the ubiquity and pervasive in critical environments.